



## **Isishwankathelo Senkqubo-Sikhokelo Yolawulo Lokhuseleko Lwendalo Esingqongileyo Kwimiyezo Eseleyo yeSizwe Yabantu Nendalo – Projekti yeMEY (IYY 8) kunye Nemiyezo Eseleyo yaBantu kunye neNdalo—Ukusebenzisa lindlela Zenkxaso-Mali Ezizinzileyo zeProjekti yeIEY (ISMYNZEY)**

### **Umbono wama-2040 weSANParks**

**SANParks** (Imiyezo Yesizwe yaseMzantsi Afrika), kwingxoxo nabachaphazelekayo, iphuhlise isicwangciso sekamva lolondolozo esibizwa *Umbono wama-2040*. Umbono wama-2040 ujolise ekukhathaleni izinto eziphilayo ezahlukeneyo kwaye kuxhamle abantu. Injongo kukubandakanya wonke umntu, ukukhusela okusingqongileyo nokudala imisebenzi—ngakumbi emaphandleni. Ilandela injongo zesizwe soMzantsi Afrika zokunceda iplaneti kunye nabantu bayo.

### **Yintoni iMihlaba Emikhulu Yokuhlala (MEY)?**

Enye yembono eziphambili ze-2040 kukudala i **IMIHLABA EMIKHULU YOKUHLALA** okanye i-MEY. Le yimimandla emikhulu yomhlaba wokuhlala apho:

- lintlobo ngentlobo zezinto eziphilayo zikhuselwe,
- Abantu bangakwazi ukuphila basebenze,
- Izilwanyana, izityalo kunye nabantu zonke zingaphumelela kunye
- Imisebenzi idalwe ngamashishini alungele indalo, kunye
- Wonke umntu uphethwe ngokufanelekileyo, kuquka noluntu lwasekuhlaleni

i-MEY ijolise **ekubuyiseleni umva umonakalo** owenziwe kwindalo, kwaye iqinisekise **umntu wonke oxhamlayo kulomhlaba uyancedisa ukuwukhusela**. Imali yeziprojekti ivela kwi:

- **IYY (Indawo Yokusingqongileyo Yehlabathi)**
- **ISMYNZEY (Isikhokelo Sengxowa Mali Yetlobo Ngetlobo Zezinto Eziphilayo Yehlabathi)**

Zinceda ukuxhasa iprojekti ezimbini ngemali:

1. **Projekti IYY 8** – Iqwalasela ekucwangciseni kunye nokwakha IEY zokuqala.
2. **Projekti ISMYNZEY** – Iqwalasela ekuqinisekiseni ukuba kukho imali eyaneleyo yokugcina ezi IEY zisebenza ixesha elide.

**WWF - US**, isebenza njenge **Ziko leProjekti yeIYY**, ibonelela ngoyilo kunye nokuphunyezwa kwenkxaso kwiprojekti zeIYY, ngokuvunywa ngokupheleleyo malunga nemigaqo nkqubo, imithetho nemigaqo yeIYY.

---

### **Izakwenza ntoni leProjekti yeIYY8?**

Iprojekti yeIYY8 ifuna:

- Ukwakha **iingingqi ezi3 zeMEY** (Ingingqi enkulu ye-Addo, Amadlelo engca aseMpuma kunye neBarberton-Makhonjwa), egubungela malunga nehektare eziziGidi ezi2,
- Ukunceda **uluntu lwengingqi**, ngakumbi **amabhinqa kunye nolutsha**, ukuqala amashishini alungele indalo, kunye
- Ukuqinisekisa abantu nendalo bangahlala kunye ngoxolo.

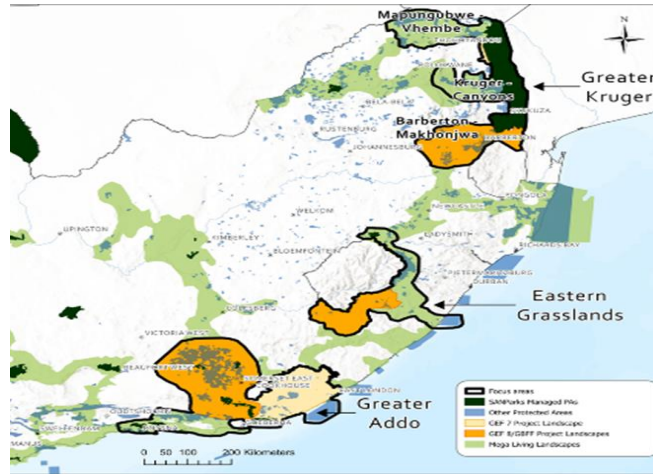


Fig 1: three Project MLLs (areas in orange)

### Indawo Eziphambili zeProjekti IYY8:

1. **Ukucwangcisa nokuSebenza kweeMEY**
  - Misela iofisi zasekuhlaleni (ezibizwa Hubs zeMEY)
  - Qeqesha iinkokeli zasekuhlaleni kunye namaqela eSANParks ukulawula umhlaba kakuhle
2. **Ukwakha Imisebenzi Elungelene Nendalo**
  - Nceda abantu bakhe amashishini angazukonzakalisa Indalo
  - Qinisekisa uluntu lwasekuhlaleni luyaxhamla kunhlaba obangqongileyo
3. **Ukukhusela indalo kunye**
  - Ukwangeza ingingqi ezintsha ezikhuselekileyo
  - Phucula indlela iindawo ezikhuselweyo ngok eziqhutywa ngayo
  - Quka uluntu lwengingqi kwizigqibo
4. **Ukufunda kanye Nokulandela Inkqubela**
  - Yabelana ngoko kusenbenzayo (kunye noko kungasebenziyo)

### Izakwenza ntoni iprojekti yeISMYNZEY?

Iprojekti yeISMYNZEY iqwalasela ekunyunyeni **imali nenkxaso**. Ingokuqinisekisa ukuba iMEY inayo imali yokuqhuba unaphakade, nasemva kokuba eziprojekti zinkulu sele ziphelile.

**Kanjani?** Ngokuvavanya intlobo ezahlukeleleyo zenkxaso mali, njenge:

- **Iikhrediti zentlobo ngentlobo zezinto eziphilayo**(amashishini ahlawula ukunceda indalo)
- **Inkxaso yeKhaboni** (ukulwa ukutshintsha kweMozulu)
- **Intsebenziswano phakathi kukarhulumente kunye namashishini abucala** (amashishini kunye nabantu ekuhlaleni besebenza kunye norhulumente)

### Injongo eziphambili zeISMYNZEY:

1. **Misela iinkqubo zenkxaso mali ezihlakaniphileyo**
  - Nceda SANParks ifumane kwaye ilawule imali engaphezulu
2. **Sebenzisa izicwangciso**
  - Qinisekisa iIEY zizaqhuba kwaye zikhusele indalo
3. **Bandakanye uluntu lwasekuhlaleni**
  - Qinisekisa uluntu lwasekuhlaleni luyanceda ukukhokela kunye nokuxhamla kw-MEY
4. **Landela iziphumo**
  - Qwalasela ukuba iiprojekti zihamba njani kwaye wabelane ngohlaziyo

## Ukugcina iiprojekti zikhuselekile zingenamkhethe (Izikhuselelo)

i-IYY inemigaqo ukuqinisekisa eziprojekti :

- Azonzakalisi abantu okanye imeko yokusingqongileyo,
- Zibandakanya umntu wonke kwizigqibo,
- Zinezicwangciso ezicacileyo nohlahlo lwabiwo mali,
- Zimamela inkxalabo zabantu, kunye
- Zisombulula iingxaki ngokungenamkhethe ukuba kukho into engahambanga kakuhle.

Lena kuthiwa lu- **Khuselelo Lokusingqongileyo neNtlalo(KLN). Injani lenkqubo?**

- **Nyathelo 1:** Buza abantu izimvo zabo kuqala phambi kokuba iprojekti iqale.
- **Nyathelo 2:** Yabelana ngezicwangciso zeprojekti esidlangaleni (kumakhasi onxibelelwano, kunye naseKuhlaleni).
- **Nyathelo 3:** Hlala uthetha nabanhlali ngelixa iprojekti iqhuba.

Qho ngonyaka, kuzobakho ukuhlola ukuqinisekisa i-KLN njengoko kubekiwe kwi**Sakhelo Solawulo Nokhuseleko Lokusingqongileyo Nentlalo (SLKLN)** zisetyenziswe ngokfanelekileyo. I-KLN ezihambelana neprojekti zibekiwe ezantsi:

<b>Khuselelo Lokusingqongileyo Nentlalo (KLN)</b>	<b>Sebenza xa kuthen</b>	<b>Esebenzayo kwi project ye-IYY8</b>	<b>Esebenzayo kwi project ye-ISMYNZEY</b>
Uthethwathethwano Lwabachaphazelekayo	Rhoqo	Ewe	Ewe
Iindlela zezikhalazo	Rhoqo	Ewe	Ewe
Imo engqongileyo kunye Nolawulo lomngcipheko wentlalo	Rhoqo	Ewe	Ewe
Ukhuseleko lwendawo zokuhlala zendalo	Ngamanye amaxesha	Ewe	Ewe
Ukuhlaliswa kwabantu ngokutsha ngokuzikhethela kunye nothintelo lokufikeleleka	Ngamanye amaxesha	Ewe	Ewe
Impilo nokhuseleko lwabahlali	Ngamanye amaxesha	Ewe	Ewe
Abantu bomthonyama	Ngamanye amaxesha	Hayi	Hayi
Izixhobo Zenkcubeko	Ngamanye amaxesha	Ixhomekeke kwimisebenzi esekwe kwindawo	Ixhomekeke kwimisebenzi eskwe kwindawo
Ulawulo Lwezimbuzane	Ngamanye amaxesha	Ixhomekeke kwimisebenzi esekwe kwindawo	Ixhomekeke kwimisebenzi esekwe kwindawo

I- **SLKLN** ibonelela ngesizathu sokusebenza kokhuseleko ngalunye kwakunye nesikhokelo malunga namanyathelo ekufuneka athatyathwe ukuthotyelwa kweKLN ngexesha lokuphunyezwa. Icandelo Lolawulo lweProjekti iya kuqinisekisa ukuba ezizikhuselelo ziyasebenza njengenxalenye yenkqubo yokuphuhlisa izicwangciso zoLawulo loKhuseleko lweNdalo kunye neNtlalo (ngamanyathelo okunciphisa) afunekayo kuyo yonke imisebenzi yeprojekti.

---

## Zingumngcipheko kangakanani eziProjekti?

Phakathi kwe IYY, iprijekti nganye inikwa **udidi lomngcipheko:**

- **Udidi A:** Mngcipheko ophezulu (ifuthe elikhulu – dinga uphando olupheleleyo)
- **Udidi B:** Mngcipheko ophakathi (ifuthe elithile – funa ukuphononongwa ngokuyinxenye)
- **Udidi C:** Mngcipheko ophantsi (ifuthe oluncinci de lungabiko – akudingeki phononongo)

Iiprojekti ze IYY 8 kunye neISMYNZEY zilu **Didi B**, ethetha ukuba:

- Lingakhona ifuthe lokusingqongileyo okanye intlalo.

- Kodwa ke ezi zingalawulwa omanyane zithintelwe ngezicwangciso ezilungileyo

---

### Ziyilwa njani eziprojekti?

Ezi projekti ziyilwe ngoku:

- Ngokuphanda iiprojekti ezifanayo,
- Ngokuthetha nothotho oluninzi lwamaqela achaphazelekayo kuquka noluntu lwasekuhlaleni,
- Ubamba iindibano zocweyo zoyilo kwindawo nganye MEY, and
- Ukuhambela ingingqi apho i-MEY izakumiswa .

I- SANParks kunye neqela labo lamacebisi bamamele imibono, baphendula imibuzo, basebenzisa loonkcukacha ukuphucula iprojekti.

---

### Imingcipheko yeProjekti yeMEY esonokwenzeka(Yintoni esenokonakala?)

Nangona leProjekti ye-MEY ezininzi ezintle, zikhona izinto ezinokonakala ukuba aziphethwanga kakuhle. Nazi ezo zinto

#### Mngcipheko Ekuhlaleni (Ingabachaphazela kanjani abantu)

1. **Abantu basenako ukungayazi ba bangathetha njani okanye bacele uncedo .**  
Abanye abantu hleze bangakwazi ukuxela iingxaki ngenxa yolwimi, umgama, ukungabikho kwelInternet okanye ukungawazi amalungelo abo.
2. **Abanye babasebenzi beprojekti hleze bangayazi imithetho ilandelwa njani.**  
Abantu abaqhuba iprojekti hleze badinge uqeqesho ngakumbi, ngakumbi ukuba ubaphatha njani abantu kunye nendalo ngokungenamkhethe.
3. **Abantu basenokungafikeleli kumhlaba abawusebenzisayo.**  
Ukwakha iindawo ezintsha ezikhuselekileyo kungathetha ukuba abantu abakwazi ukusebenzisa ezinye iingqingqi abaxhomekeke kuzo ukulima, iinkuni okanye ukuqokelela ukutya.
4. **Utshintsho lwamandla lungabangela ingxabano.**  
Ukuthatha isigqibo sokuba nguban ozakulawula umhlaba kungabangela uphazamiseko lwamandla ekuhlaleni, ngakumbi phakathi kwenkokheli zemveli kunye namaqela omhlaba asekuhlaleni.
5. **Izilwanyana zasendle zingonzakalisa abantu ezindlwini zabo.**  
Uluntu olukufutshane emiyezweni banengxaki kakade nezilwanyana ezonakalisa amadlelo okanye izindlu okanye zonzakalise abantu. Umhlaba owangezelekileyo okhuselekileyo ungayongeza lengxaki
6. **Ubundlobongela or ubungozi bungenzeka.**  
Abantu abasebenza emadlelweni bangajongana nengozi kubazingeli abangekho semthethweni okanye bajongane nodushe olusingisele kwisini.
7. **Projekti zamshishini hleze zingamcedi umntu wonke.**  
Ngaphambili, ezinye iprojekti zolondolozo zokwenza imali zaphela zincipha nje abantu abambalwa, ngelixa abanye bashiyeka bekwi meko bi kakhulu.
8. **Mali ayifikelelo rhoqo ebantwini basekuhlaleni.**  
Iimali zokunceda ekuhlaleni amaxesha amaninzi ziphela zixinga kwabaphezulu zingafikeleli kuba abazidingayo
9. **Iinkqubo ezindala ezingafanelekanga zingaqhubeka.**  
Xa imali namandla ingabiwa ngokufanelekileyo, iprojekti ingenza ukungalingani okukhoyo kube kubi ngaphezulu.

---

#### Mngcipheko wokusingqongileyo(Ungayichaphazela njani indalo)

1. **Ukunceda abantu ngokutyala okulungelene nendalo kunye nezilwanyana kungayonzakalisa indalo.**

Ukuba ayenziwa ngobulumko, ukukhulisa izilwanyana kufutshane nendawo ezikhuselweyo kungonakalisa iindawo zokuhlala omanyane zisebenzise amanzi ngokugqithisileyo.

2. **Imililo kufuneka ilawulwe kakuhle.**

Imililo iyindalo kwindawo ezinengca, xa ingacwangciselwanga kakuhle, ingayingozi.

3. **i-Projekti hlelze ingayincedi indalo.**

Imisebenzi eyenzelwa kufutshame emiyezweni ingayonzakalisa indalo, ngakumbi xa benokuvumela ngokungenanjongo ukuzingela okungekho semthethweni okanye bavumele ukusetyenziswa ngokugqithisileyo kweziseko.

4. **Ukuxuba izilwanyana zasendle kunye nemfuyo kungangcipheko.**

Ukuba izilwanyana zasendle nemfuyo zikhuliswa kufutshane kakhulue kunye, izifo zinganwenwa phakathi kwazo kunye nabantu.

5. **Ukhenketho nalo lungayonzakalisa indalo.**

Ukwakha iiHotele nendawo ezingumtsalane kubakhenkethi ingayonzakalisa indalo ukuba ayicwangciselwanga ngobulumko.

### Lemingcipheko izakulawulwa njani?

- i-Projekti **SLKLN** ibeka isicwangciso ukunceda ukuthintela okanye ukunciphisa ezingxaki.
- Imali ibekelwe bucala ukuthatha **amanyathelo esithintelo**, anjengoku qeqesha abantu, ukumamela uluntu ekuhlaleni, kunye nokuqinisekisa imithetho iyalandelwa.
- Injongo **kukuchonga, ukuphepha kunye nokuncipjisa iingxaki phambi kokuba** ziqale, okanye usabele ngempumelelo apho zingacingelekanga.

---

**Isicwangciso Sothethwathethwano Sabachaphazelekayo** sikhokelo esicacisayo ukuba iprojekti i **thetha kunye isebenze njani nabantu ekuhlaleni** ngalolonke ixesha leprojekti. Kwakhona, ihlela inkqubo yothethwathethwano lwabachaphazelekayo ethathiwe ukuyila leprojekti, kuquka uluhlu lwabo bonke abachaphazelekayo, kuquka uluntu lwasekuhlaleni, abanini mihlaba kunye nabo banamalungelo emihlaba, inkokheli zemveli, amagosa karhulumenete kunye nabo shishino labucala. Uthethathethwano lwabachaphazelekayo ayiyo ntlanganiso nje enye— **yinqubo eqhubekayo**. Esisicwangciso sisebenza kunye namanye amaxwebhu amabini abalulekileyo:

- **Isicwangciso Sentshukumo Yesini**, esibonelela ngesikhokelo ekuqinisekiseni ukuba **bobabini amadoda namabhinqa baphatwa ngokufanelekeyo**, kunye
- **Isakhelo Socwangciso Lokubandakanya Uluntu (ISLU)**, enceda kuquka **onke amaqela abantu**, ngakumbi abo hleze bashiyeke ngaphandle, kuquka ulutsha kunye namanye amaqela abuthathaka.

Ukuba iprojekti ichaphazela amaqela abuthathaka (njenga Bantu Bemveli), i- **Sakhelo Socwangciso Lokubandakanya Uluntu (ISLU)** ithi iprojekti kufuneka ifumane **Imvume Yasimahla, Yangaphambili Nenolwazi (ISYN)** phambi kokubhekela phambili. Lento ithetha ukuba amaqela abuthathaka (kuquka abantu bemveli) **banelungelo lukuzithathela izigqibo ngokwabo** kunye nokuthi ewe omanyane hayi emva kokuqonda ngikupheleleyo ukuba iprojekti ingantoni. i-ISLU ibeka inkqubo yokufumana i-ISYN.

Abachaphazelekayo bazakubandakanyeka kwiprojekti ngalendlela ikulomzobo usezantsi:

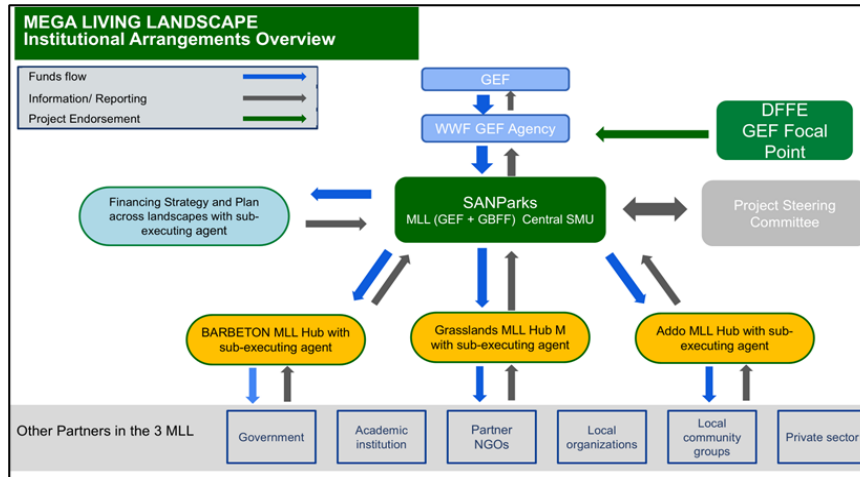


Fig 2 – Institutional arrangements

Kubalulekile ukuquka kunye **nokumamela amazwi ohlukileyo**. Iprojekti icwangcisa uku:

- **Ukusebenzisa kunye nalapho kudingekayo, iphucule** iindlela abantu ekuhlaleni kunye nabanye abachaphazelekayo ababelana kakade ngezimvo kunye bathathe izigqibo.
- Kwingingqi nganye ye-IEY , kuzakubekwa **iqonga lokusebenzisana** ukuze abantu ekuhlaleni kunye nabanye abachaphazelekayo bakwazi ukudibana bancede ukucwangcisa kunye nokuqhuba iprojekti.
- Kunyaka wokuqala, i-IEY Hub nganye izawkwenza **Isicwangciso Sothethwathethwano Lwabachaphazelekayo** kunye ne**Sicwangciso Sokubandakanya Uluntu** ukukhokhela indlela abasebenza ngayo namaqela asekuhlaleni.
- Iprojekti izakuqinisekisa ukuba **zonke iintlobo zamaqela achaphazelekayo ziyabandakanywa**—njenge nkokheli zemveli, abanini mhlaba, amalungu okuhlala, kunye namaqela adla ngokungaviwa.
- Bazakuzama nokuqinisekisa ukuba **akukho mntu uvaleleka ngaphandle**, ngoku:
  - Nceda abantu baqonde indima yabo
  - Kuphepha ukudideka
  - Sebenzisa ulwimi lwengingqi kangangoko kunokwenzeka ukuze wonke umntu aqonde.

### Kwenzeka nton xa kukho ingxaki? (iNdlela Yokulungisa Izikhalazo Zeprojekti – NLZ)

Iprojekti ze-IEY zingachaphazela abantu abahlala kwindawo yeprojekti okanye kufutshane. Kukho inkqubo yokunceda abantu **babuze imibuzo, babelane ngeengcebiso**, okanye **baxele iingxaki**. Lena ibizwa **Indlela Yokulungisa Izikhalazo**, okanye **NLZ**.

### Isebenza njani leNLZ yeProjekti?

Kukho **amanyathelo amathathu** onokuwalandela xa unesikhalazo:

1. **Qala ngeQela leProjekti** (SANParks – inkcukacha ikhona ezantsi)
2. Ukuba ayisombululekanga, iya ku **WWF-GEF**
3. Ukuba nalapho ayikasombululeki, iyaku **Nobhala we-IYY**

### i-NLZ yeProjekti Kufuneka :

- **Ingabinakhethe** – Wonke umntu kufuneka aphaathwe ngendlela efanayo
- **Izimile** – Izigqibo aziphenjelelwa mntu
- **Kube Lula Ukuyisebenzisa** – Ulwimi kunye nemiyalelo elula
- **Ikhawleze Ukuphendula** – Ingxaki zisonjululwa ngokukhawleza
- **Ivuleleke Kumntu Wonke** – Wonke umntu, kuquka amaqela abuthathaka, angayisebenzisa
- **Ibenoxanduva** – Uzakufumana impendulo rhoqo, kwaye ungabhena xa kudingeka

## Yintoni onokuyixela?

- **Ubuqhophololo, urhwaphilizo**, okanye umntu owenza into engalunganga
  - **Ukonakala kokusingqongileyo** (njengo ngcoliseko okanye ukonzakalisa izilwanyana/izityalo)
  - **Abasebenzi abaphethwe kakubi**
  - **Ukuxhatshazwa okanye ukuphatheka kakubi** (ngakumbi udushe olubhekisele kwiSini)
- 

## Ukuhlonipha Inkubeko


Iqela leprojekti lizakuqinisekisa inkqubo **iyayihlonipha inkubeko yengqingqi** kwaye ayinamkhethe **kumntu wonke**, ngakumbi abo bangadinga uncedo olwangezelekilyo. Abasebenzi beprojekti bazo **kuqeqeshwa** ukuba zijongwa njani izikhalazo ngendlela efanelekileyo kwakunyaka wokuqala.


---

## Ungazithumela Phi Izikhalazo Neziphakamiso?

### Indawo Egxile Kuyo Inkqubo Yendawo Ezinkulu Zokuhlala – Ntombentsha Nkwentsha

 Address: SANParks, 643 Leyds Street, Muckleneuk, Pretoria

 Postal Address: PO Box 787, Pretoria, 0001, South Africa

 Tel: 012 426 5000

 Email: [Ntombentsha.nkwentsha@sanparks.org](mailto:Ntombentsha.nkwentsha@sanparks.org)

Amaxwebhu apheleleyo eProjekti ungawakhuphela kwiwebsite ka SANParks ku:

<https://vision2040.sanparks.org/>